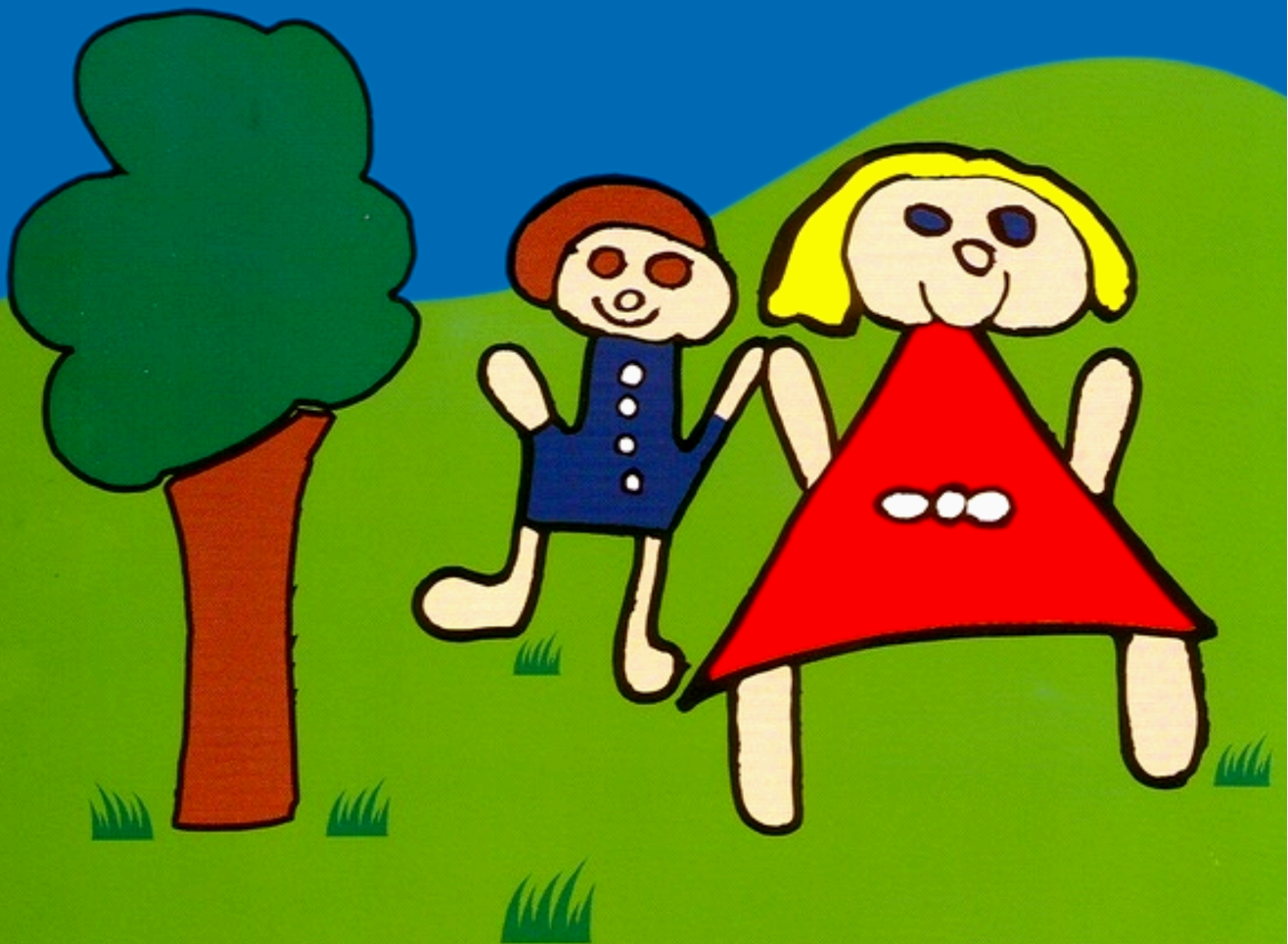




Prospectus

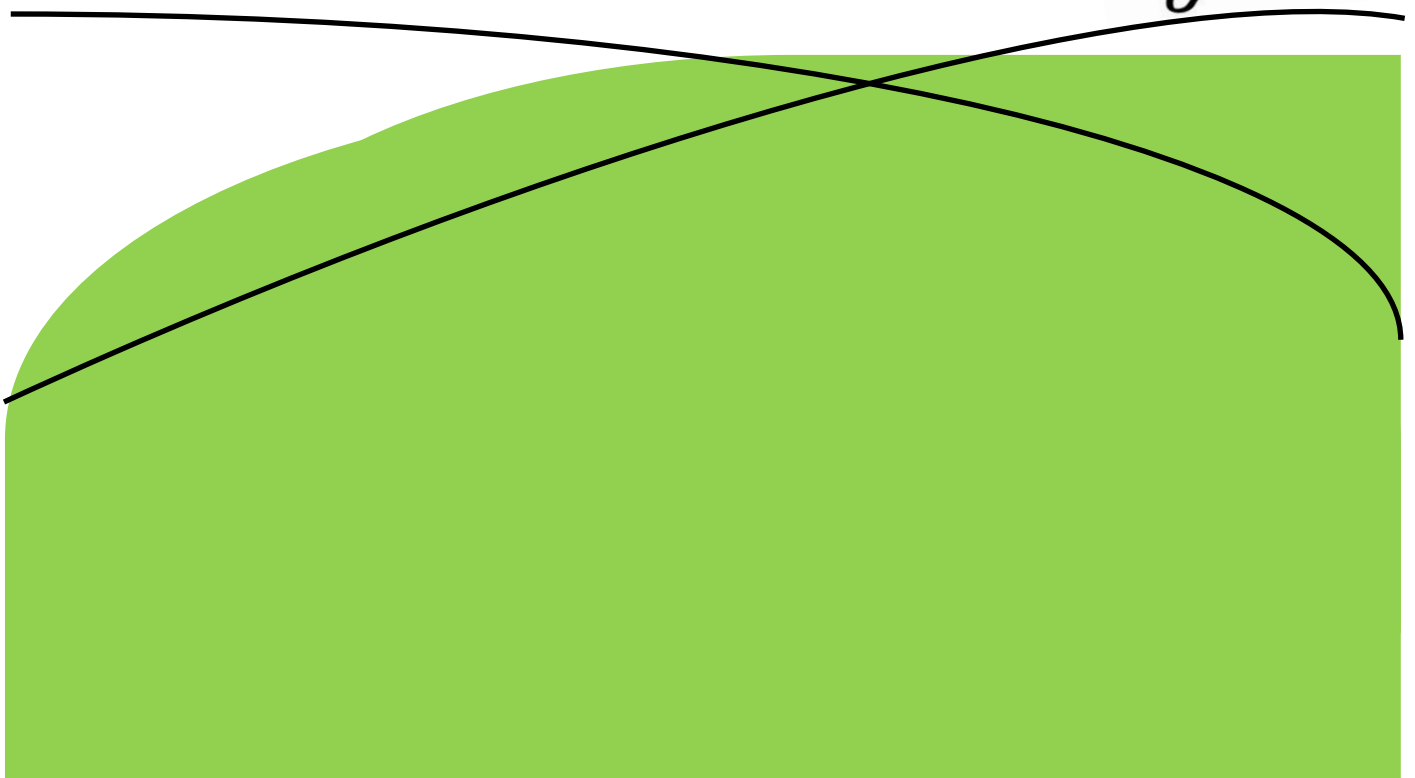
LITTLE ANGELS Day Nursery





Little Angels Day Nursery

Prospectus





Why choose Little Angels?

1

We provide a safe and nurturing environment for children to express themselves, and fall in love with learning

2

A wide range of sessions times, and days to suit your needs, and we also accept ad-hoc extra sessions wherever possible

3

Carefully cultivated, stimulating and exciting activities to help deliver our Educational Programme designed to meet every child's needs

4

Our nutritious and delicious menu, that changes seasonally, is carefully designed by our cooks to ensure the children receive all the necessary food groups in the correct proportions

5

All 3 branches have received an Ofsted 'GOOD' rating , where we were praised for being an *'extremely caring and nurturing nursery'*, where *'children demonstrate high levels of concentration on their chosen activities, and are engaged at all times'*, and children are *'kind, considerate and polite to one another'*.

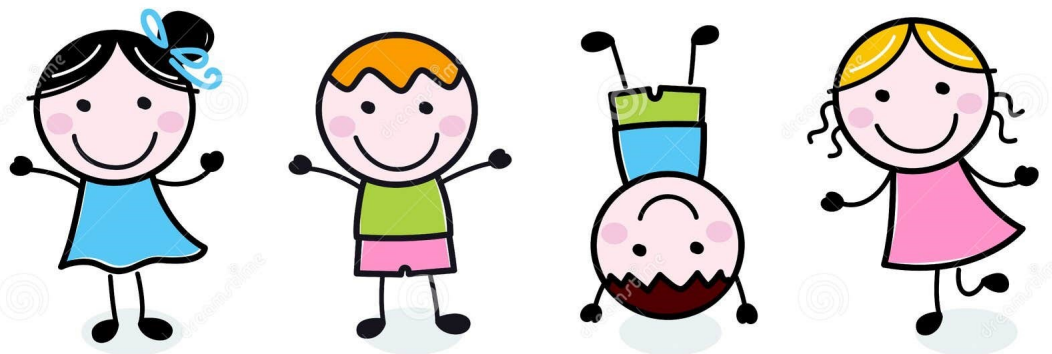


Nursery Vision

Our vision is for our settings to be safe happy places where all children flourish and grow in a positive, friendly, and language rich learning environment.

We promote equality, diversity, British Values and Cultural Capital, which is the essential knowledge children need to prepare them for their future success by giving them the best possible start to their early education.

We come together as strangers, and leave as friends.





Our nurseries

East Tilbury

Our East Tilbury nursery is located in a residential community in the grounds of East Tilbury Primary School and is readily accessible from East Tilbury station. As we are such a short distance from the A13 we are also easily accessible by car from Grays, Stanford-le-Hope, Chadwell St. Mary and Lakeside.

Our East Tilbury branch is purpose built and boasts large open spaces flooded with natural light and a large landscaped garden with a race track. In addition to nursery care this branch also offers a Breakfast and After-school club, collecting children from the East Tilbury Primary School at the end of the school day. This is for children age 4-11.

East Tilbury Children's Centre

Princess Margaret Road, East Tilbury

Call us: 01375 841 100

Essex RM18 8SB

Aveley

Our Aveley branch is located in the newly refurbished Aveley Family Hub, on the Old Aveley school site, which was built in 1914. The Family Hub hosts various services, groups and community rooms. We have easy access from Thurrock Lakeside, Upminster, Purfleet and surrounding areas.

The branch contains 3 rooms; a dedicated space for babies, toddlers and Pre-School children. Aveley has a large garden, covering the seven areas of learning over both a grassed area and playground. Aveley branch is open 8am-6pm.

Aveley Family Hub

Stifford Road, Aveley

Call us: 01708 866 093

RM15 4AA

Tilbury Town

Our newly built nursery in Calcutta Road Tilbury has been designed to offer a high standard of care for all children in Tilbury and the surrounding areas, and is ideally situated in between our other two established sites.

The nursery is located on the ground floor of a newly built block of flats, there is a bus stop right outside and we are a 2 minute walk to Tilbury Town train station that has a direct line into Fenchurch Street.

Little Angels Day Nursery

57 Calcutta Road, Tilbury

Call us: 01375 841 313

RM15 4AA



Our approach

Learning through play

At Little Angels we believe that it is important to give your child the best start to their development and education, and we also believe as parents and guardians you play a vital role alongside us. Our settings provide tailored environments specific for birth to 5 years. Each room has carefully selected resources to help captivate and ignite curiosity in each and every child.

Our staff are highly trained, and use our ambitious curriculum to deliver the EYFS, and help each child learn the skills needed to have the best start in their early childhood.

Our curriculum for 3-4 year olds includes math's and phonics sessions, in fun and engaging activities throughout the day to prepare them for the learning time they will have when they enter reception class at school. We work in close partnership with Thurrock Council and local schools and academies to ensure we are offering the best possible support.

Our baby rooms have a big focus on sensory and comfort support, they will often be seen dancing and singing alongside their key persons in a sensory party, or engaging in real-life functional play in the home corner, even using their whole bodies to explore different messy activities.

Our toddler rooms enjoy using our outdoor space for free-flow play so whether they enjoy making mud pies in the outdoor kitchen, riding a bike around the track, or practicing their balancing on the beams they will be sure to enjoy outdoor space, explore the natural environment, solve problems with their peers and show resilience at risky play opportunities.



"The Early Years Foundation Stage (EYFS) sets standards for the learning, development and care of children from birth to 5 years old. All schools and Ofsted-registered early years providers must follow the EYFS. It gives all professionals a set of common principles and commitments to deliver quality education and childcare experiences to all children. As well as being the core document for all professionals working in the foundation years, the EYFS framework gives mums and dads confidence that regardless of where they choose for their child's early education, they can be assured the same statutory commitments and principles will underpin their learning and development experience".

-The Foundation Years



Admissions and our team

When a space becomes available they will be offered to children whose names are on completed application forms, supplied by the nursery, and held on a waiting list. The nursery place will be offered to the parent/guardian by telephone, and then confirmed in writing by email. Parents are invited to come and see the nursery if they have not done so already. The settle sessions provide the opportunity for parents/guardians and the child to speak with staff, familiarize themselves with the setting and get to know other children. Parents are welcome to stay with their child until they feel ready to leave them. We always suggest the child is introduced gradually into the nursery environment. During your settle sessions we will gather as much information as possible to make their nursery experience tailored to them for the best start in their early education. They will be assigned a key person who will be their comfort and guide, continually assess and plan activities that are both interesting and challenging for your child. We follow the guidelines set out in the EYFS to help achieve this happy, safe and secure environment.

SEND and inclusion

Little Angels believes that no child should be excluded from the nursery activities because of a diagnosis of special needs or a disability as defined by the Children Act 1989 and/or Education Act 1993. We are committed to recognizing and responding sensitively to the needs of any child or parent/guardian regardless of age, gender, class, family status, ability disability race, colour, ethnic origin, culture, religion or belief, and make any possible adjustments to allow the children to have access to the same education as one another. We will require any necessary information to further support the child's learning and parents or guardians. Little Angels offer staff additional training wherever possible to support this.

Mouth- watering meals

The nursery provides breakfast, lunch, tea and morning/afternoon snacks depending on your child's session times. We believe in providing the right kind of tasty nutritious and balanced foods to encourage healthy growth. This means providing the right carbohydrates for energy, proteins for building muscle, and essential vitamins and minerals for healthy bones and teeth. We have a colour coded menu to provide parents with the nutrients in each meal. These meals are cooked from scratch, on site, by our cooks who hold the relevant food hygiene certificate. Meal times are an opportunity for children to sit and engage in quiet conversation with their peers, making it a social and happy occasion, promoting good eating habits.



Terms and conditions

1. You will be required to pay a months deposit and one month in advance of attendance to secure your place. Fees will then be payable on 1st of every month, and your deposit held until you give one months notice to terminate your place. Parents are responsible for all fees billed, even if the fees are to be paid by a 3rd party, e.g Local Authority, college or work place, if they fail to pay, for whatever reason, parents will be expected to pay the outstanding amount immediately.
2. Failure to pay promptly will result in your child being refused entry to nursery and eventually losing their place. Continued non payment of fees will always be taken seriously and court proceedings will be instigated.
3. Little Angels Day Nurseries will not operate on Bank Holidays (fees are calculated to factor in Bank Holidays). There will be no refunds made in the unlikely event that the decision is made to close the nursery due to adverse weather conditions or other situations out of our control.
4. There will be no refunds for sickness or holidays as your child's place is secured throughout the year. It is not possible to arrange for a child to "make-up" time in the case of an absence from nursery.
5. A rate of £5.00 will be charged for every 5 minutes that any child is collected later than their pre-arranged time, as this can severely affect the staffing ratios, as laid down by Ofsted. These charges can increase to a maximum of £100.00, payable on collection.
6. Fee increase will be notified 4weeks in advance, and any changes to these terms and conditions will be displayed on our website and via BLOSSOM.
7. If you intend to remove your child from "Little Angels," or change attendance times, a minimum of one months written notice or one months fees in lieu of notice is required, if your child attends nursery on a monthly basis. We will endeavor to accommodate all requests subject to availability.
8. The Day Nursery retains the right to use their absolute discretion in deciding whether or not to accept any child. The Nursery retains the right to require the removal of any child from Nursery by giving 24 hours written notice.
9. The Nursery retains the right to refuse any child entry to nursery if they are deemed unwell and to ask parents to collect their child if they become ill whilst at nursery. In an emergency the nursery reserves the right to call a Doctor or have the child taken to hospital should it be considered necessary.
10. If your child receives Nursery Education Grant Funding and you fail to complete or sign a funding form, you will be liable to pay LADN Ltd for 15/30 hours (whichever is applicable). It is your responsibility to inform us if you are claiming whole or part of your 30 hours funding with another provider, or you find you are not eligible for the funding.
11. By signing a Nursery Education Grand Funding form, you are agreeing to LADN Ltd claiming 15/30 hours of funding on your behalf for the WHOLE TERM. If you decide to remove your child during term time there will be No refunds of NEG for that funding period. Whilst we endeavour to accommodate parental requests for times and days for your 15/30 hours of funded childcare, all places are due to availability and at the discretion of the Nursery Manager, and you may be offered a place at another of our nurseries to meet your entitlement.
12. If your child attends Breakfast and/or After School clubs at LADN Ltd, your fees will be billed on a half termly basis, with payment due on the first day of that half term. There will be no refunds, if your child does not attend for the whole of that half term.



Fees and funding

Paid sessions

Weekly: £270.00 - (8-6pm)

Daily: £60.00 - (8-6pm)

Half Day: £40.00 - (8-1pm) (1-6pm)

School Day Session: £47.00 (9-3pm)

Morning/Afternoon Session: £26.00
(8.30-11.30am) (12.30-3.30pm) (3-6pm)

Early Start: £8.00 (7.30am-8am) (Available at East Tilbury only)

Additional hour extension - £10.00

Funded Sessions

Single Session 8.30am-11.30am or 12.30pm-3.30pm — Free

Afternoon Session 12-6pm— Free

Please note that only one funded session may be chosen per day and will incur a consumable fee of £1.00p per hour.

All spaces are subject to availability.

Funded places are limited



30 hours subsidized childcare

30 hours subsidized childcare for working parents of three and four year olds:

- For working families
- With 3 and 4 year old children
- 22 hours stretched over 52 weeks

30 hours subsidized childcare is available for 3 and 4 year olds of working parents. The 30 hours offer doubles the existing 15 hours currently available to all 3 and 4 year olds and could save working families up to £5000 a year.

Parents can apply for 30 hours childcare at the same time as Tax-Free Childcare, via the childcare service. To qualify, a parent, and their partner, will need to expect to earn (on average) the equivalent of working 16 hours a week at their National Minimum Wage (£120 in 2017-18 at the National Living Wage, less for people on the National Minimum wage). And earn less than £100,000 a year each. If they are on maternity, paternity or adoption leave for another child, or unable to work because they are disabled or have caring responsibilities, they could still be eligible.

Tax-free Childcare

Parents can now get up to £2000 per child, per year under the age of 12 and £4000 for disabled children under 17.

- For working families, including the self-employed, across the UK
- With children aged under 12 (or under 17 for disabled children)
- For every £8 paid in, the government will add an extra £2, up to £2000 per child per year towards childcare costs. This means you can get up to £500 every 3 months per child

A parent and their partner will need to expect to earn (on average) the equivalent of working 16 hours a week at their National Minimum wage (£120 at the National Living Wage, less for people on the National Minimum Wage). And earn less than £100,000 a year each. If they are on maternity, paternity or adoption leave for another child, or are unable to work because they are disabled or have caring responsibilities, they could still be eligible.

Tax-free childcare can be used with the 15 hours and 30 hours schemes. It can't be used at the same time as childcare vouchers, Universal Credit or tax credit.

Parents can find out more about the full government childcare offer on childcarechoices.gov.uk. Parents can use the childcare calculator and apply for tax free childcare and/or 30 hours free childcare through the Childcare Choices website.